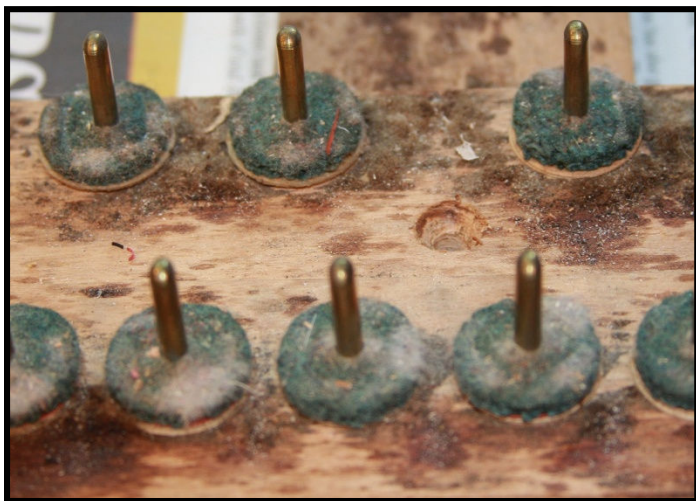


The Piano Owner's Heads-Up Guide to Important Piano Maintenance

Focus On: Refelting the Keybed



Information provided courtesy of:
Bill Davis, RPT
770.778.6881
bill@pianoplace.net

The quiet operation of the keys of your piano depends upon three sets of felts (front rail punchings, balance rail punchings and back rail cloth) that function as cushions. Besides their ability to absorb unwanted sounds, these felts are also important in determining both the height of the keys and the depth of the keystroke. As the piano is played over the years, however, these felts become thinner and harder. **The keybed felts of your piano have worn to the point where removal and replacement would benefit both the touch and appearance of your piano.**

As the keybed felts harden and wear thin the keys become uneven in height from note to note. Also the amount of downward stroke (key dip) begins to vary, resulting in an action which has an uneven touch. A perfectly level set of keys with a uniform amount of key dip is essential to a piano action which is performing up to its potential.



Back rail cloth



Front rail punchings

The felt used for backrail cloth, as well as the balance rail and front rail punchings, is a very thick, dense felt that is designed to stand up to decades of constant use.

Keybed felts come in a range of thicknesses, so that the original size of the felt installed at the factory may be duplicated. Paper and card punchings as thin as .002" are used under the felts for final adjustments necessary for level keys and even key dip.



New set of keybed felts in place.

When the old worn keybed felts have been replaced with a complete set of new felts, the piano will be able to function more as it did when it was a new instrument.

Bill Davis, RPT
The Piano Place GA
Appts: <http://bit.ly/2G4ICDJ>